

## A.MANDATORY DISCLOSURE

### I NAME OF THE INSTITUTION

Name	SARANATHAN COLLEGE OF ENGINEERING
Address	Permanent Location as approved by AICTE
	VENKATESWARA NAGAR, TIRUCHI MADURAI MAIN ROAD (NH 45B), E.PUDUR POST
Village	PANJAPUR
Taluk	SRIRANGAM
District	TIRUCHIRAPALLI
Pincode	620012
State	TAMIL NADU
Phone No.s	0431 – 2473286,2473682
Fax No.	2473684
Web site	<a href="http://www.saranathan.ac.in">www.saranathan.ac.in</a>
E-mail	<a href="mailto:sce@saranathan.ac.in">sce@saranathan.ac.in</a>

### II. NAME & ADDRESS OF THE PRINCIPAL

Dr. S. Malayappan,  
No. 37/84, 4<sup>th</sup> Cross,  
Raja Rajan Nagar,  
K.K. Nagar, Tiruchirapalli – 620 021.  
Phone No. : Off : 0431 – 2473286, Cell : 94434 57707  
Fax No. : 0431 – 2473684

### III NAME OF THE AFFLIATING UNIVERSITY

Anna University ,Trichy  
Trichirappalli-24

#### IV GOVERNANCE

##### ❖ Members of the Board and their brief background

S.No.	Name	Position	Qualification	Present professional position / Occupation
1.	Sri.S.Ravindran	Chairman	B.Com	Businessman Specialization – Finance and Accounts
2.	Sri.R.Jagannathan	Member (Society)	B.Sc, B.E.,	Engineer – specialization – Electrical Engineering
3.	Sri.S.Vaidynathan	Member (Society)	M.Com, B.L., M.B.A.,	Advocate & Income Tax Practitioner Specialization – Finance and Accounts
4.	Dr.K.Meena	Member (Society)	M.E. Ph.D	Principal, Srimathi Indira Gandhi College, Trichy. Specialization – Computer Science
5.	Sri.N.Gopaldaswamy	Member (Industrialist)	B.E.,	Director, Dalmia Cements (B) Ltd., Dalmiapuram – Renowned Industrial Engineer & Management Expert
6.	Sri.D.Harsha	Member (Industrialist)	B.E.,	General Manager (Retd.) BHEL, Tiruchi 620014 – Consultant Environmenalist
7.	Dr.P.Subramanian	Member (Educationist)	Ph.D	Director(Retd), CEESAT,N.I.T, Tiruchirapalli – 620015
8.	Dr.R.Balakrishnan	Member (Educationist)	Ph.D	Professor Emiratus, Bharathidasan University, Trichy
9.	Dr.S.Malayappan	Member (Secretary)	Ph.D	Principal

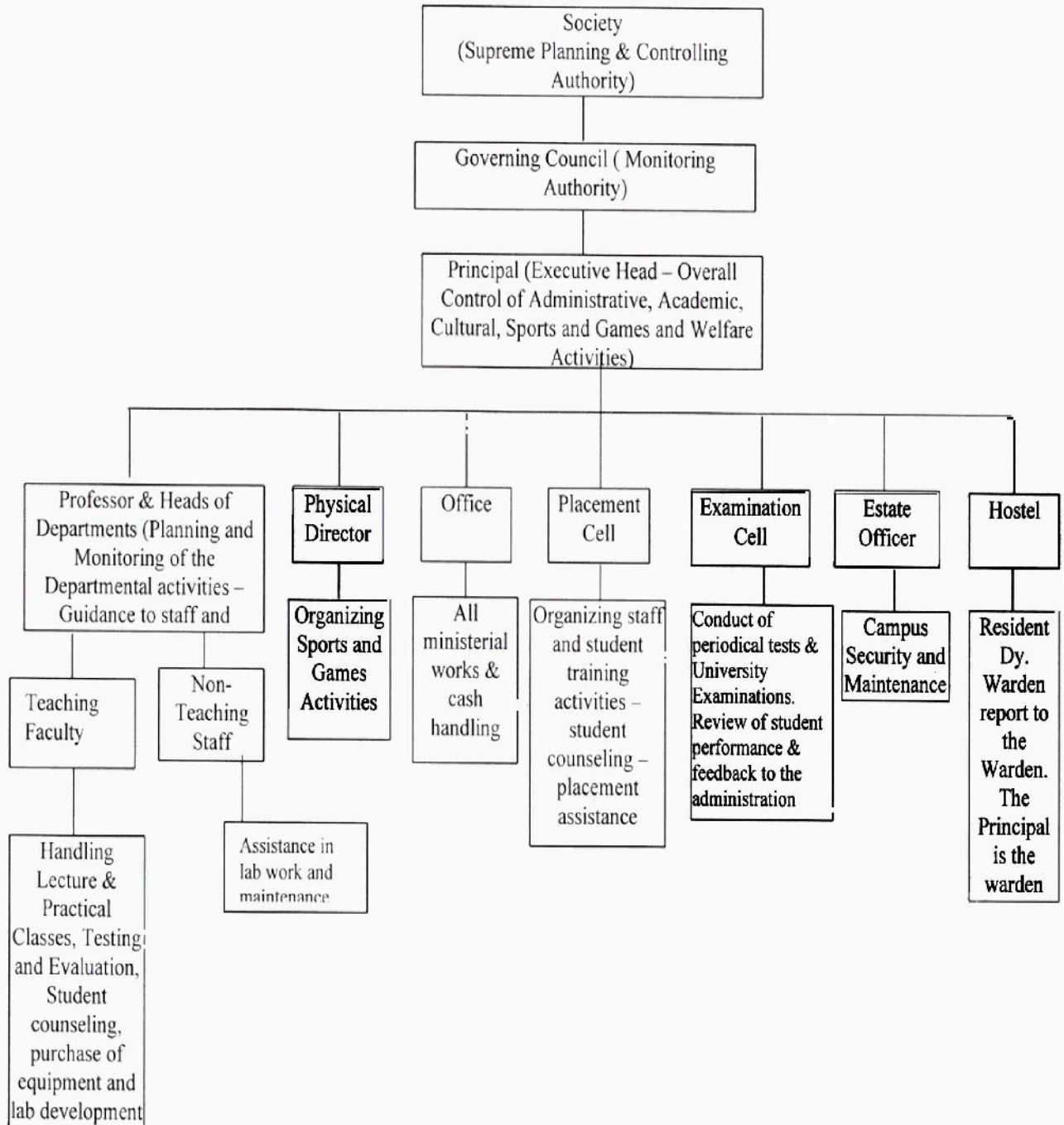
The Governing Council meets twice a year

❖ Members of Academic Advisory Body

S.No.	Name	Position (Chairman / Member / Member Secretary)	Qualification	Present Professional position / Occupation
1.	Dr. S. Malayappan	Chairman	Ph.D.,	Principal
2.	Dr.Y Venkataramani	Member	Ph.D.,	Professor
3.	Prof. G. Muthuraman	Member	B.E.,	Professor
4.	Dr. K. Meena	Member	Ph.D.,	Principal, Srimathi Indira Gandhi College, Trichy Spcialization Computer Science
5.	Dr. P. Subramanian	Member (Educationist)	Ph.D.,	Director, CEESAT, NIT, (Retd.,) Tiruchirapalli – 620 015.
6.	Sri. N. Gopaldasamy	Member	B.E.,	Director, Dalmia Cements (B) Ltd., Dalmiapuram
7.	Sri. D. Harsha	Member	B.E.,	General Manager (Retd) BHEL, Tiruchi.

The Academy Advisory Body meets twice every year

## Organizational Chart and processes



- ❖ Nature and extent of involvement of faculty and students in academic affairs/ Improvements

A Class Committee consisting of teachers of the concerned class, student representatives (at least two boys and two girls) and a chairperson who is not teaching the class is formed. It is like the 'Quality Circle' with the overall goal of improving the teaching learning process.

- ❖ Mechanism / Norms & Procedure for democratic / good Governance

Periodical meetings of the Heads of Departments are conducted. All issues, Curricular, Co-curricular and extra curricular are discussed and action plan is prepared. The performance in the tests, progress in syllabus coverage, student welfare, student feedback etc., are reviewed and strategy evolved for overall improvement. Cases of in discipline are referred to the discipline and welfare committee for necessary action.

- ❖ Student Feedback on Institutional Governance / faculty performance

This is taken once every semester.

- ❖ Grievance redressal mechanism for faculty, staff and students

The Grievance and redressal committee looks after this function. The constitution of the committee as recommended by the University is given below.

Sl. No.	Name	Position	Category
1	Prof.T.G.Krishnamurthy	Chairman	Senior Professor
2	Prof.S.Rangarajan	Member	Head of the Department
3.	Prof.P.Kothandaraman	Member	Head of the Department
4.	Prof.A.Ramesh Babu	Member	Warden of Boy's Hostel
5.	Ms. A.Revathy	Member	Lady faculty member
6.	Mr.V.Mohan	Convenor	Student Counselor (staff)

V. PROGRAMMES

❖ Name of the Programme approved by the AICTE

M.C.A. – Master of Computer Applications – applying for accreditation

Number of seats 60

Duration – 3 years

Cut off mark/rank for admission during the last three years (TANCET)

2009-2010: 38 2008 –2009 : 34 2007 – 2008: 35

• Fee

Tuition Fees – Rs.25000/- per Year; University Fees – As fixed by the University;

• Placement Facilities

Professor (Training and Placement) organizes Career Guidance and Personality Development Programmes. Through experts training is imparted to face the Selection process in industries On campus and off campus interviews are arranged

• Campus placement in last three years was 16 students with minimum salary, maximum salary and average salary

Minimum salary – 8000/- Maximum – 15000/- ; Average Salary – 10000/-

Total no. of students placed by the Institution through its Placement Cell			
Year	Discipline	Total no. of students passed out (last 3 years)	Total no. of students placed through placement cell (last 3 years)
01	MCA	116	25

Details of companies/Industries, which visited the institute for placement since the last three years.		
SNo	Name of the Company/Industry	Number of Students placed
1	Larsen & Tubro	03
2	INFOSYS	04
3	SUTHERLAND	03
4	HCL	05
5	SYNTEL	03
6	COGNIZANT SOLUTIONS	05
7	IFLEX	2

❖ Name and duration of programme(s) having affiliation / collaboration with Foreign University(s)/Institution(s) and being run in the same Campus along with status of their AICTE approval. If there is foreign collaboration, give the following details

--NIL --

## VI FACULTY PROFILE

- ❖ List faculty members:
  - Permanent Faculty – 13
  - Visiting Faculty – NIL
  - Adjunct Faculty – Nil
  - Guest Faculty – Nil
  - Permanent Faculty: Student Ratio – 1:13.8
- ❖ Number of faculty employed and left during the last three years'

No. of faculty employed – 03 Nos.; No of faculty left – 03 nos.

[Faculty Details](#)

## VII PROFILE OF PRINCIPAL

### **Principal with qualifications, total experience, age and duration of employment at the institution concerned.**

1. Name: Dr. S. Malayappan
2. Date of Birth : 14.04.1954
3. Educational Qualification: B.E., M.E., Ph.D.,
4. Work Experience
  - Teaching – 28 years
  - Research – 8 years
  - Industry – Nil
  - Administration – 12 years
5. Area of Specializations – Industrial Metallurgy (Mechanical)
6. Subjects teaching at Under Graduate Level – Metallurgy & Material Science
  - Operation Research
  - Industrial Engineering
7. Research guidance

		No of papers published in
Masters – 15	-	National Journals – 11
Ph.D. – 2	-	International Journals – 18
8. Projects Carried out – Nil
9. Patents – Nil
10. Technology Transfer – Nil
11. Research Publications – 18
12. No. of Books published with details – Nil



## VIII FEE

- ❖ Details of fee, as approved by State fee Committee, for the Institution

Tuition Fees – Rs. 25000/- per year,

- ❖ Time schedule for payment of fee for the entire programme

Normally within 15 days from the date of commencement of classes – extension of time is given in the case of poor and deserving students and those who have applied for Bank loans

- ❖ No. of Fee waivers granted with amount and name of students.

This depends upon the number of students who apply for waiver – Decision is taken based on Merit – Cum – Means.

- ❖ Number of scholarship offered by the institute, duration and amount

This also depends upon the number of aspirants and the funds available – granted on ‘Merit – Cum – Means’ basis

- ❖ Criteria for fee waivers / scholarship

This is decided on case to case basis – may vary from year to year

- ❖ Estimated cost of boarding and lodging in Hostels

1. Room Rent – Rs. 15000/- per annum.
2. Boarding – dividing system – Rs. 1800/- (approx.) per month

## IX ADMISSION

- ❖ Number of seats sanctioned with the year of approval  
60 seats – 2008 – 2009
  
- ❖ Number of students admitted under various categories each year in the last three years  
  
2009-2010 : 60 nos; 2008– 2009 – 56 nos.; 2007 – 2008– 57 nos.
  
- ❖ Number of applications received during last two years for admission under Management Quota and number admitted.  
  
2008 – 2009 – Application received – 100; Admitted – 30;  
2007 – 2008 – Application received – 50; Admitted – 21;

## X ADMISSION PROCEDURE

## XI CRITERIA AND WEIGHTAGES FOR ADMISSION

These two items are decided by the State Government. The instructions issued by the Government are followed.

The details will be included in the information Brochure (2009- 2010) and will be displayed on the Website as soon as the instructions are received from the concerned authorities for the year 2009 – 2010

## XII Application Form

## XIII LIST OF APPLICANTS

## XIV INFORMATION ON INFRASTRUCTURE AND OTHER RESOURCES AVAILABLE LIBRARY:

- Number of Library books/Titles/Journals available.  
No. of Titles –2890; No. of Volumes –9450.
- List of online National/International Journals subscribed :
  - ✓ IEEE – COMPUTER
  - ✓ IEEE-MULTIMEDIA
  - ✓ IEEE-IT PROFESSIONAL
  - ✓ IEEE INTELLIGENT SYSTEMS,
  - ✓ IEEE INTERNET COMPUTING,
  - ✓ IEEE DISTRIBUTED SYSTEMS
  - ✓ IEEE PERVASIVE COMPUTING,
  - ✓ IEEE NETWORK
- E-Library facilities – Available.

#### COMPUTING FACILITIES:

- Number and Configuration of systems - 100 nos. PIV systems & Core 2 DUO
- Total number of systems connected by LAN - 100 nos.
- Total number of systems connected to WAN - Nil
- Internet bandwidth - 8 Mbps (24 hrs.)
- Major software package available
  
- BORLAND C/TURBO C++, UNIX , ORACLE, MS-ACCESS, SQL-SERVER,D2K,VB,VC++,J2SDK1.4.01, WEBSERVER – WEBSHERE/BIZ TALK SERVER,VB.NET,VC++.NET,UNIX,ADOBE PHOTOSHOP,MACROMEDIA FLASH,FRONT PAGE 2000, WINDOWS 2000 ADVANCED SERVER, WINDOWS 2000 PROFESSIONAL EDITION, LINUX SERVER NOVELL NETWORK SEVER .

#### **Special purpose facilities available**

##### *Games and Sports Facilities*

A Playground of 5 acres with facilities to play cricket, football, volleyball, badminton and tennis is available – Indoor games & Gym facilities are also available.

- Extra Curricular Activities

Seminars & quiz competitions and cultural programmes are arranged. Students are encouraged to participate in symposiums and cultural programmes in other institutions.

- Soft Skill Development Facilities

Conducting Programmes for aptitude test and Communication skill classes.

- Number of classrooms and size of each –04 –100 sqm. Each.
- Number of Tutorial Rooms and size of each –01-100 sqm.
- Number of computer centers with capacity of each –01-335 sqm.
- Central Examination Facility, Number of rooms and capacity of each.
- One big hall of size 465 sqm.

## **Teaching Learning Process**

A Class Committee consisting of teachers of the concerned class, student, representatives(at least two boys and two girls) and a chair person who is not teaching the class is formed. It is like the 'Quality Circle' with the overall goal of improving the teaching learning process.

- Curricula and syllabi for each of the programmes as approved by the university.
- As prescribed by the university.
- Academic calendar of the university. As prescribed by the university.
- Academic Time Table Will be published at the beginning of the academic year.
- Teaching load of each faculty varies from 12 to 18 hrs.
- Internal Continuous Evaluation System and place
- Theory courses :- Three tests each carrying 100 marks shall be conducted by the department /Institution. The total marks obtained in all the tests put together out of 300 shall be reduced to 20 marks and rounded to the nearest integer.
- Practical courses :- Every Practical exercise /experiment shall be evaluated based on the conduct of experiment/exercise and the records maintained. There shall be at least one mid-semester test. The Criteria for arriving at the internal assessment marks shall be decided (based on the class committee) by the Head of the institution and shall be announced at the beginning of every semester.
- Students' assessment of Faculty: System in place & Furnished under Governance.

## **XV RESULTS.**

The admissions for 2009 – 2010 are over. The classes are going on. The procedure suggested will be included in the Information Brochure for 2010– 2011. XII will be displayed in the website latest by 30<sup>th</sup> April 2010 – details for item XIV and XV can be put up in the website only after the declaration of U.G results and applications received.

**FEED BACK FORM**  
**(Specimen)**

CLASS:

YEAR:

Please write the appropriate number of your choice about your teachers for each paper.

1. Excellent      2. Very Good      3. Good      4. Fair      5. Poor

Understand the Code of each paper and the initials of the teachers before you start answering the questionnaire

No.	Teacher Attribute	Sub1	Sub2	Sub3	Sub4	Sub5	Sub6
1.	Enthusiasm for the Subject						
2.	Knowledge about the subject						
3.	Ability to speak loudly and clearly						
4.	Ability to invite and ask questions						
5.	Preparation for classes						
6.	Clarity of ideas and concepts						
7.	Ability to maintain discipline						
8.	Support and concern for students						
9.	Planned use of allotted time						
10.	Ability to ensure steady pace in covering the syllabus						
11.	Impartiality and fairness to students						
12.	Confidence in teaching and explaining things						
13.	Providing useful hints or tips for the university exams						
14.	Being friendly, helpful and available to students for consultation						
15.	Overall teaching effectiveness						

What do you think the Department or the College can do, so that you will derive more benefits during your period of study in this campus? (You may use the space below).

Thank you for completing this questionnaire. The information and the suggestions you have been given will be kept strictly confidential and used to provide you quality education.